

Notes

- Install in a dry sheltered position
- Profile is not sealed. Do not install where water or high humidity may be present without further protection.
- Installation should only be performed by a qualified professional
- Install in accordance with all appropriate wiring standards
- DALI is not SELV and needs to be wired accordingly
- Never connect a LED fitting to a driver that is powered. Doing so may result in damage to the LED.
- Always make sure the output voltage range and output current of the LED driver match the requirements of the LED fitting. Failure to do so may result in damage both the driver and fitting.
- The light source contained in this luminaire shall only be replaced by the manufacturer or his service agent or a similar qualified person.
- Do not install under mechanical stress.
- Allow for expansion due to changes in temperature.
- Please be aware that while the system has a very long operational life, faults may still occur, and provision needs to be made for maintenance.
- Always turn off power before working on fitting.



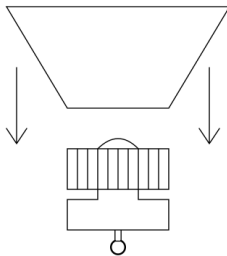
Specifications

Model	HEL-53	HEL-80	HEL-100	HEL-130	HEL-160	Units
Dimensions	206 x 201	206 x 211	283 x 239	283 x 239	283 x 254	mm
Weight	2.5	3	3	4	5.5	kg

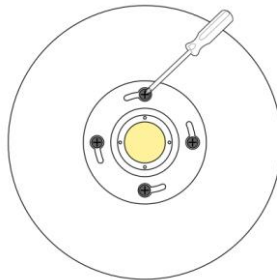
Model	HEL-200	HEL-250	HEL-300	HEL-400	Units
Dimensions	283 x 341	283 x 341	283 x 341	283 x 385	mm
Weight	7.5	9	9.5	9.5	kg

Installation

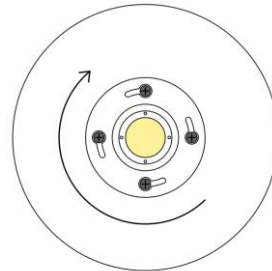
1. Place reflector on body, aligning the reflector's mount screws with the holes.



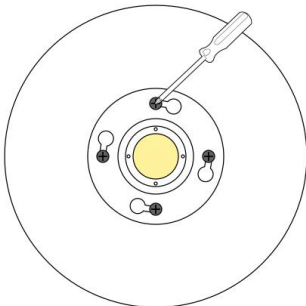
2. Loosen reflector's mounting screws.



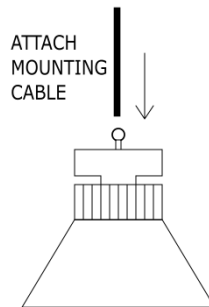
3. Twist reflector to lock with screws.



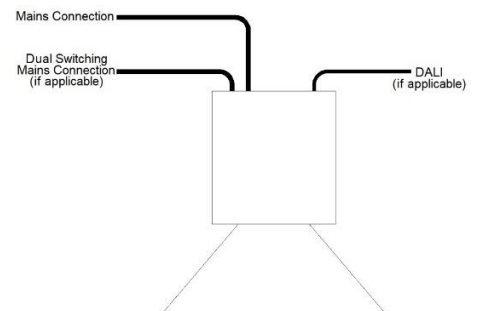
4. Tighten reflector screws.



5. Mount fitting to desired location. Ensure method of mounting & all materials used are of appropriate weight rating. Do not use the power cable to support the weight of the fitting.



6. Where applicable, connect control signals. Connect mains power to fitting.



Note: Drivers should not be covered. Drivers rely on convection air flow for cooling and covering them may cause them to enter thermal regulation.

For any technical information relating to the connection of these luminaires to dimming systems, refer to LED products at www.digilin.com.au