

Spectrum & Agent

Colour mixing & variable white downlights

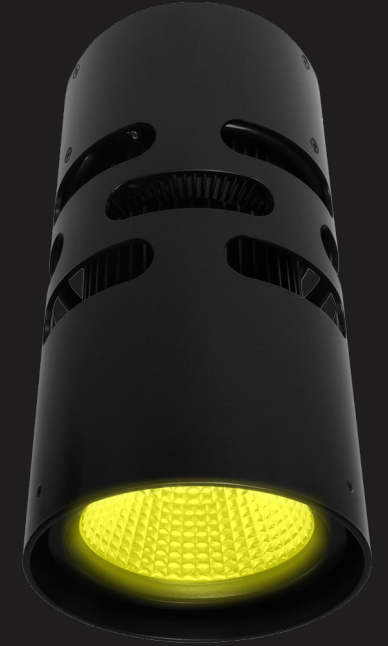
Spectrum (recessed) and Agent (suspended or surface mount) are high output colourmixing and tuneable white downlights designed for entertainment and theatrical applications. Massive efficiency gains have been achieved following an optimisation of their LED array configurations and positioning within the luminaires. With the RGB model now putting out an incredible 46 lumens per watt, these luminaires are unbelievably efficient colourmixing downlights.

Performers and stage operators will enjoy their high power, vibrant colour mixing and tuneable white colours; while venue owners and facility managers will appreciate their energy efficiency, low maintenance requirements and long performance lives.

A blue/white Backstage model has also been developed to cater to the specialised lighting needs of stage operators as they work during shows. Available with a range of beam angles and able to be combined with Digilin drivers for ultimate reliability, Spectrum and Agent are outstanding examples of electronic lighting engineering.



Spectrum



Agent



Massive lumen outputs with incredible efficiency - Spectrum and Agent represent the apex of colourmixing and tuneable white downlighting

Model	RGB	RGBW	VariWhite	Backstage
Delivered lumens	1980	2488	2420	2420/800
Luminaire power	43.3W	43.6W	29.4W	29.4/31W
Lumens per watt	46	57	82	82/26

