

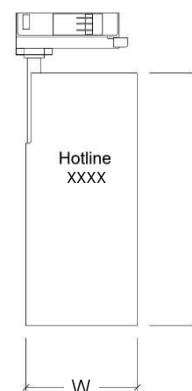
### Notes

- Install in a dry sheltered position
- Profile is not sealed. Do not install where water or high humidity may be present without further protection.
- Installation should only be performed by a qualified professional
- Install in accordance with all appropriate wiring standards
- DALI is not SELV and needs to be wired accordingly
- Never connect a LED fitting to a driver that is powered. Doing so may result in damage to the LED.
- Always make sure the output voltage range and output current of the LED driver match the requirements of the LED fitting. Failure to do so may result in damage both the driver and fitting.
- The light source contained in this luminaire shall only be replaced by the manufacturer or his service agent or a similar qualified person.
- Do not install under mechanical stress.
- Allow for expansion due to changes in temperature.
- Please be aware that while the system has a very long operational life, faults may still occur, and provision needs to be made for maintenance.
- Always turn off power before working on fitting.



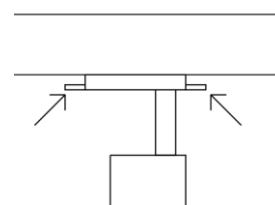
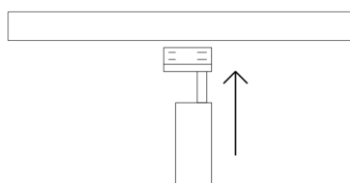
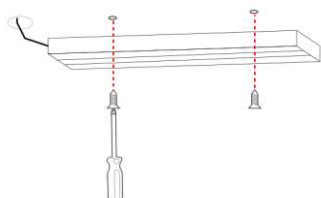
### Specifications

Model	1200	2500	3300	Units
Dimensions (L x W)	68 x 170	207 x 90	207 x 90	mm
Weight	487	870	1230	g
Mounting	Hotline Track			

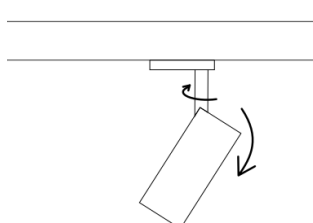
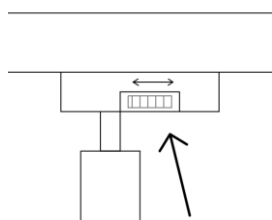


### Installation

1. Secure Track to Surface using appropriate mounting hardware.
2. Align and Insert light into track making note of keyed orientation.
3. Switch mounting locks on Tracklight.



4. If needed adjust light module's dial to correct power input.
5. Adjust light if needed.
6. Apply power to track.



**Note:** Drivers should not be covered. Drivers rely on convection air flow for cooling and covering them may cause them to enter thermal regulation.

For any technical information relating to the connection of these luminaires to dimming systems, refer to LED products at [www.digilin.com.au](http://www.digilin.com.au)